



Archaeology

David McBride



Research Findings



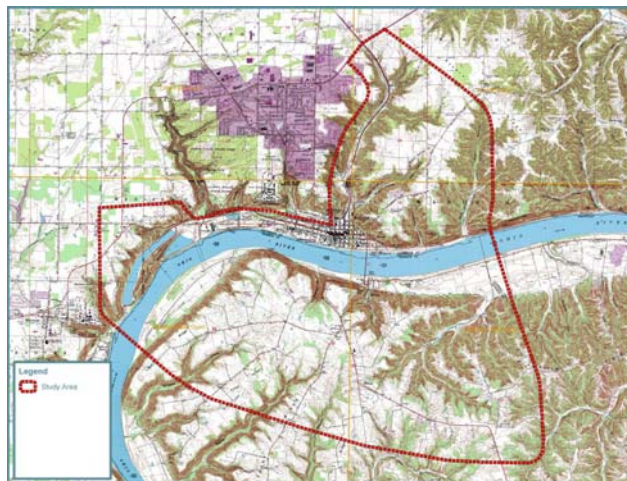
Archaeology Records Check in Indiana and Kentucky

Preliminary Archival Research

Windshield Survey of Study Area

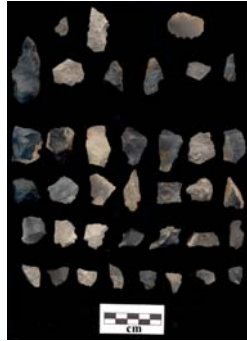


Project Area





Archaeological Resources



5



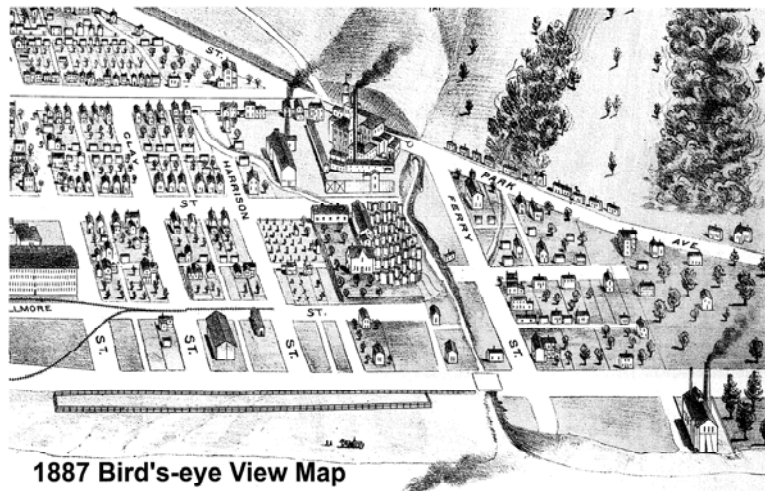
Archaeological Resources

- 15 Previously Recorded Prehistoric Sites
 - Open Habitation Sites
 - Mound Site
 - Non-mound Earthwork Site
- 5 Previously Recorded Historic Sites
 - House Sites
 - Railroad Related Site

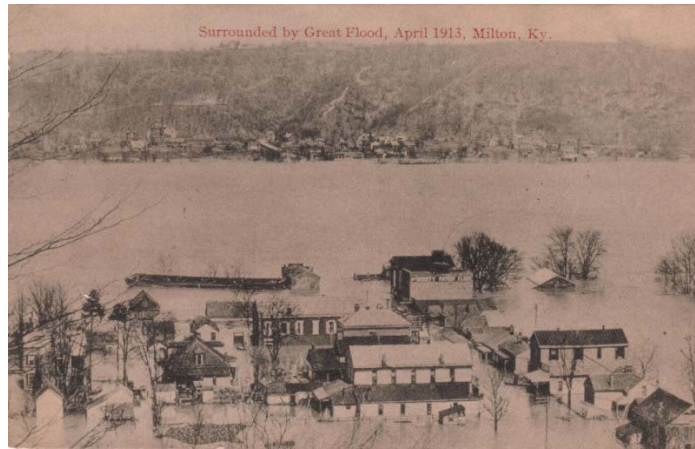
6



1854 Map of Madison, IN



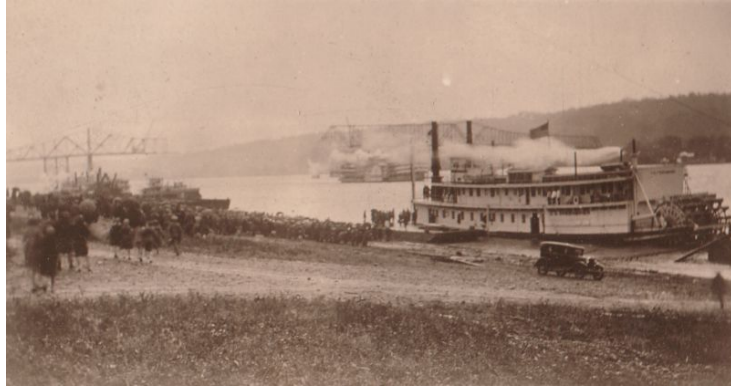
1887 Bird's-eye View Map



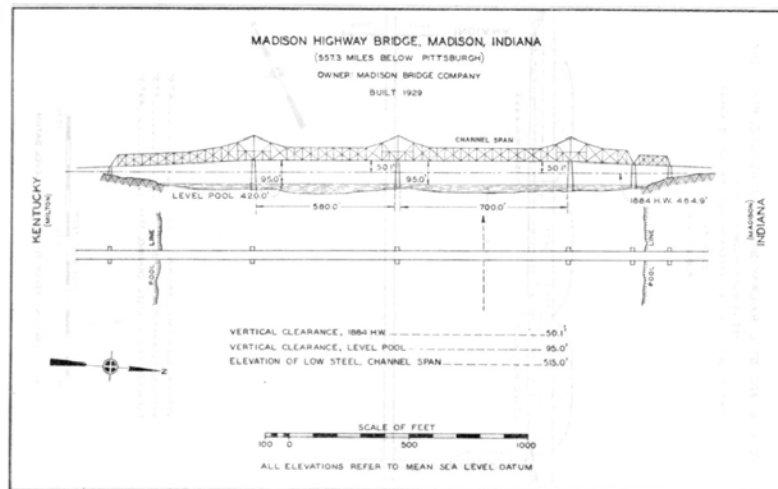
1913 Flood, Milton, KY



1913 Flood, Milton, KY



1928-1929, Milton, KY







Predictive Model



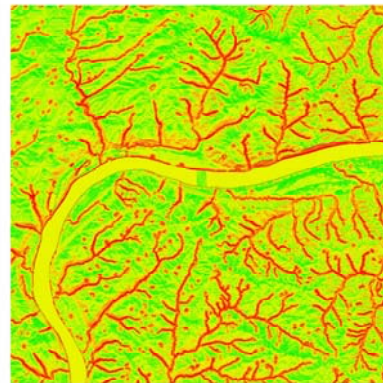
Prehistoric Model

- Variables
 - Distance to Water
 - Slope
 - Aspect
 - Avoidance of Wetlands

17



Prehistoric Model



Likelihood
High : 29
Low : 5
Max value possible is 30
Lowest possible value is 3
Higher values represent an increased possibility of locating prehistoric sites.

18



Historic Model

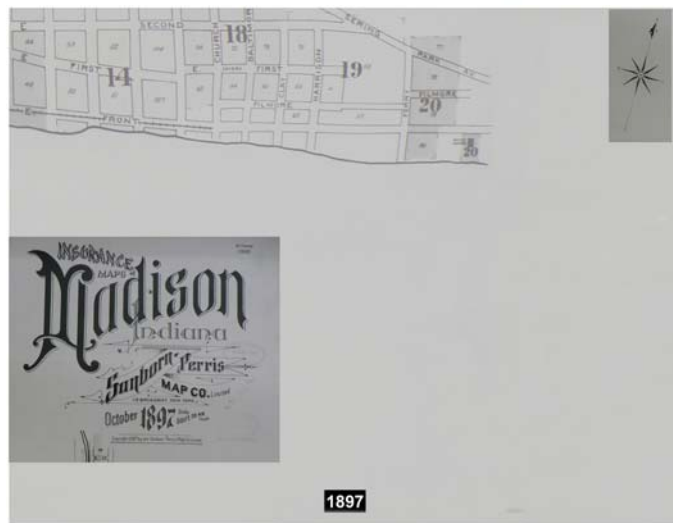
- **Travel Time Cost Surface Model**
 - **Variable**
 - **Terrain**
 - **Streams, Rivers and Lakes as Impediments**
 - **Land Cover**
 - **Location of Farms**
 - **Variables**
 - **USDA Farmland Soils Definitions**
 - **Landform Analysis**

19



River Bank History

20







25

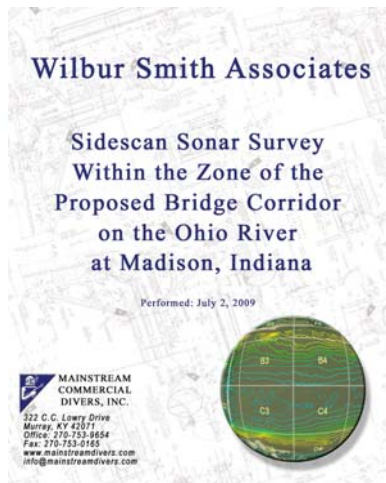


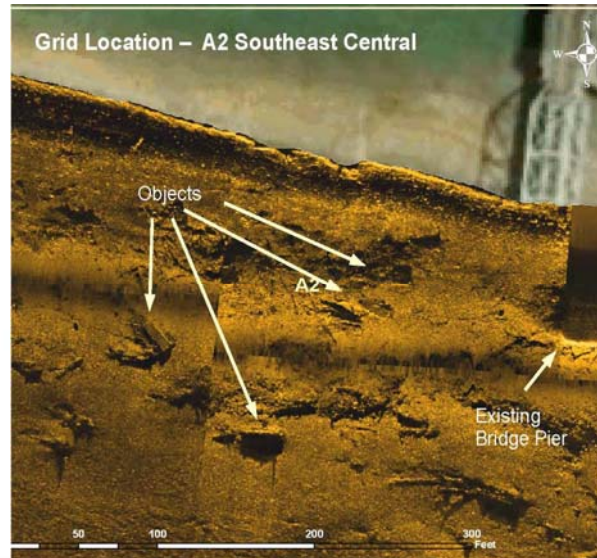
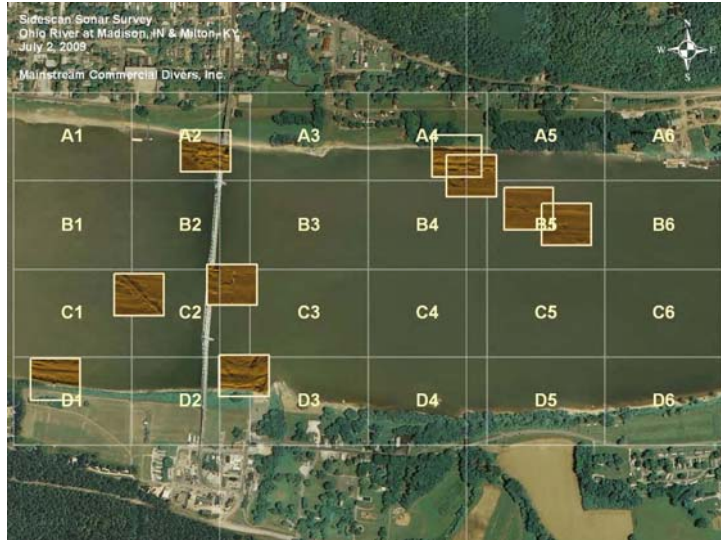
26

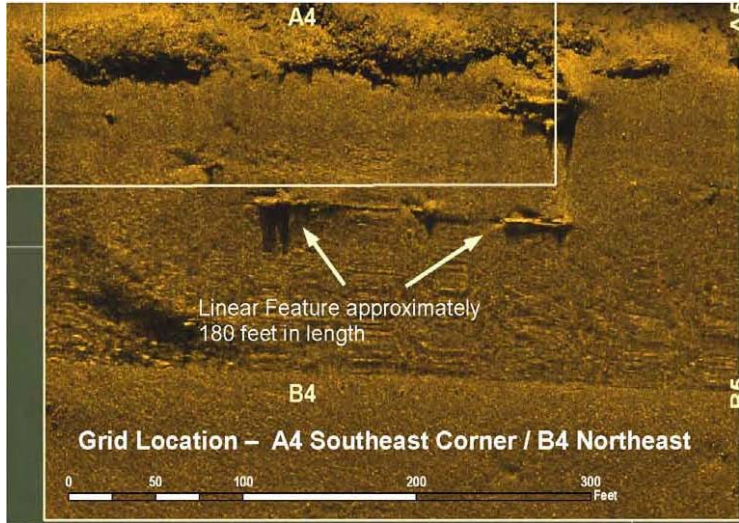
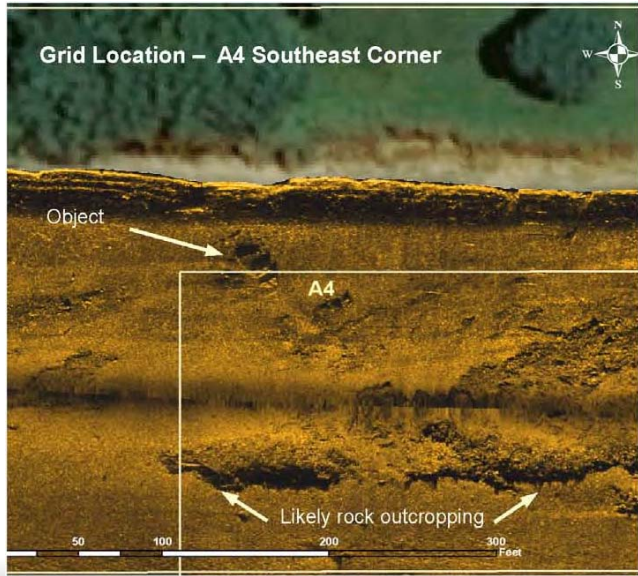


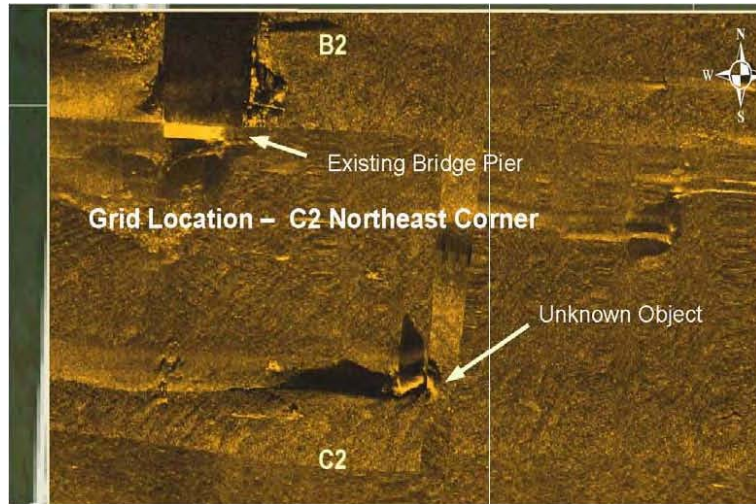
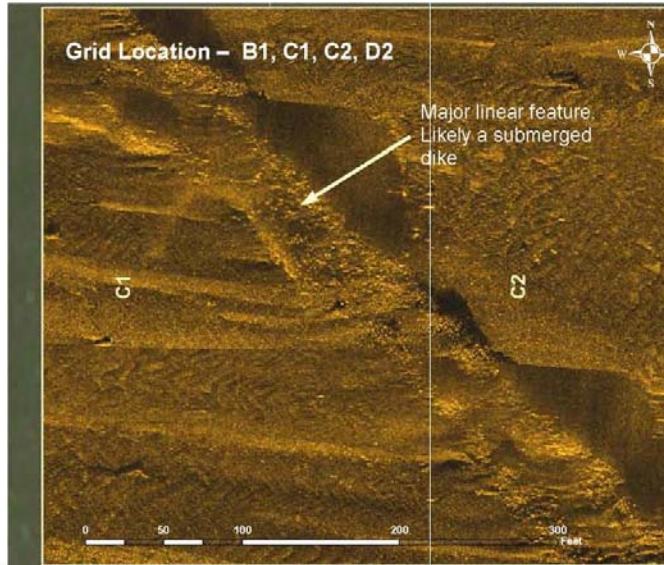


Sonar











Field Approach for Proposed Action

37



Phase I Archaeological Investigations

38



Areas of Potential Effect

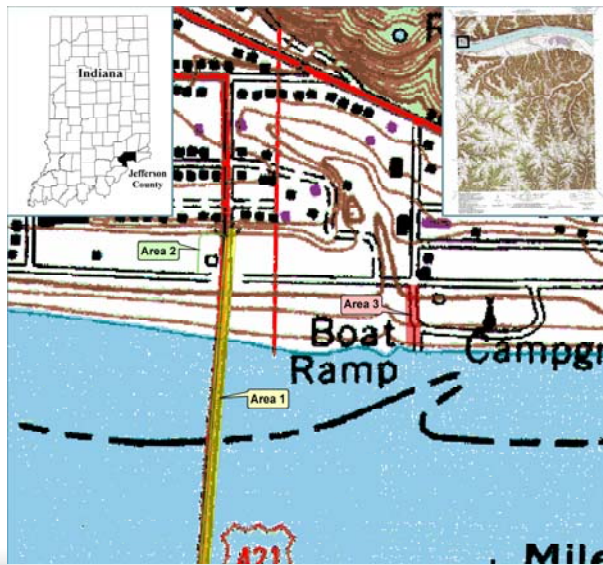


39



Shovel Test Probes and Deep Testing within the APE

40





Archaeology

David McBride