



Fact Sheet

Cultural Historic Resources

What?

Cultural historic resources are any historic remains of past human activities that are usually over 50 years old. These most commonly take the form of structures, landscapes, sites, and objects of importance to a culture or community.

Why?

Cultural historic resources are protected under state and Federal laws. If cultural historic sites are determined to be eligible for listing on the National Register of Historic Places then the sites should be avoided or the effects mitigated.

Cultural historic resources can be determined eligible under four criteria:

- A. Associated with events that have made a significant contribution to the broad patterns of our history
- B. Associated with lives of persons significant in our past
- C. Embody a type, period or method of construction, or represent the work of a master
- D. Have yielded or may yield important historical information

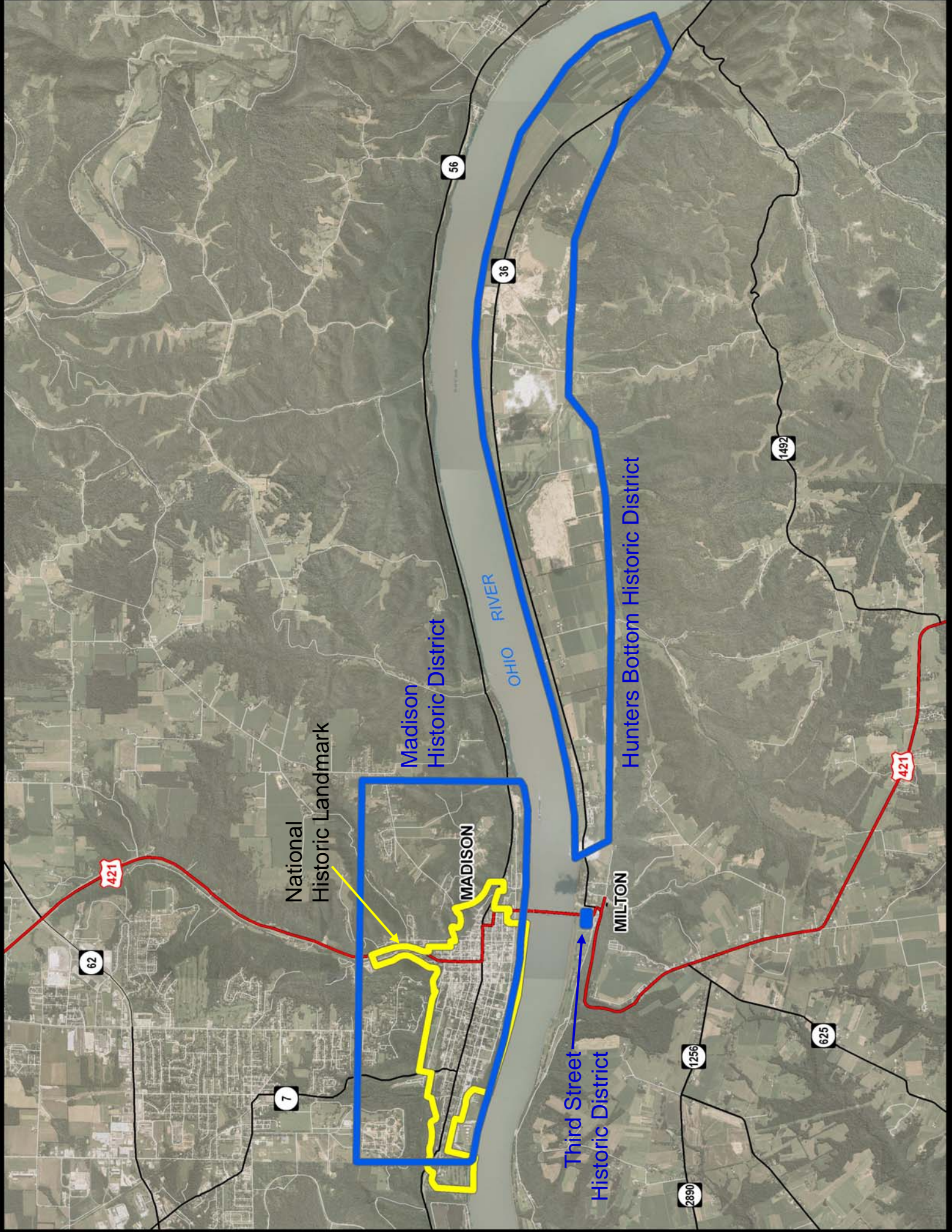
Along with the four criteria, a cultural historic resource must also retain integrity, which is the degree to which a property retains its historical identity and authenticity, evidenced by the survival of physical characteristics that existed during the resource's historic period.

Where?

There are three National Register Districts and one Historic Landmark located within the project area: the Madison Historic District, Hunter's Bottom Historic District, the Third Street Historic District, and the Madison Historic Landmark. In addition, individual properties that have been previously determined eligible or potentially eligible are also present within the project area, as are properties that have an undetermined status. Figure 1 found on the back side of this page illustrates the three historic districts' boundaries as well as the National Landmark boundary.

How?

Cultural historic resources can affect the bridge type selected as well as the location of the bridge itself. If eligible cultural historic resources are within the project area, the effects that a new bridge would have on them have to be considered. These effects can be direct such as physically impacting the resource or a portion of it as well as visually affecting the resource.



National
Historic Landmark

Madison
Historic District

Hunters Bottom Historic District

Third Street
Historic District

56

36

1492

62

7

MILTON

1256

625

2890

421

421

MADISON

OHIO RIVER