



## Meeting Protocol

### PLEASE

- Silence your cell phones
- Treat everyone with respect
- Listen to each other
- Do not interrupt
- Be brief: please limit comments to 3 minutes



## Meeting Agenda

Presentation

Formal Comments by Public

The project team will be available to answer questions at the stations after the formal comment period.

3



## A year and a half ago...

KYTC and INDOT began an environmental and preliminary design project to replace/rehabilitate US 421 bridge

Built on 1995 Planning/Environmental Study

Project goals were defined:

Final product must be affordable & constructible bridge

Existing conditions based on  
bridge inspection reports through 2006

Allocated State Funds: \$45 Million in KY and \$10 Million in IN

4



## Since then ...

- 2009 bridge inspection reports revealed structural issues
- Project Team and Stakeholders defined Purpose & Need and Range of Alternatives
- Bridge traffic restricted to 15 ton limit
- Alternatives developed and screened to identify one Preferred Alternative that will move to construction
- Application submitted for TIGER grant funding; INDOT allocated funding increased to \$50 million
- Environmental Assessment (EA) completed and available for comment

5



## Purpose and Need

Developed in consultation with Agencies & Public

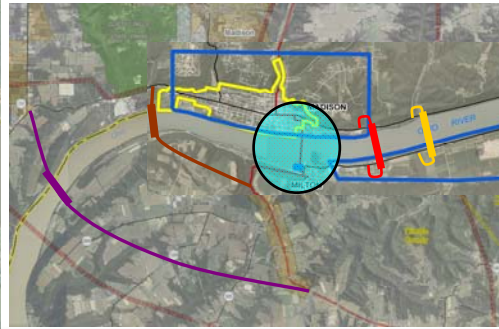
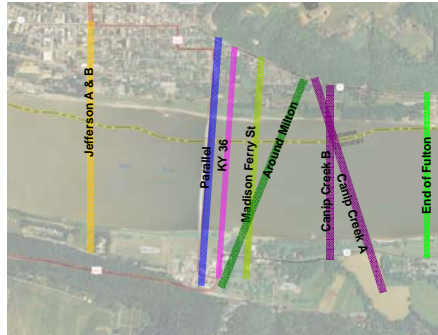
- Improve or replace functionally obsolete/structurally deficient bridge
- Improve or maintain cross-river mobility and community connectivity between Milton and Madison
- Improve safety

6



## Initial Alternatives Identified

Do Nothing	Superstructure Replacement
Rehabilitation	New Bridge on New Alignment



## Development of Detailed Alternatives

Since Summer 2009, the project team:

- Drafted detailed alignments for alternatives,
- Investigated the condition of the piers,
- Studied environmental features/impacts in the study area, and
- Consulted with agencies and the public.



## Why the Proposed Action?

Based on a variety of factors, the **Superstructure Replacement with Minimal Approaches Alternative** was selected as the Proposed Action to move towards construction

- Continued Bridge Deterioration
- Fewest Impacts to Historic Resources and Parks
- Fewest Impacts to Homes and Businesses
- Lowest Cost Alternative
- Availability of TIGER Grant Program

9



## TIGER Grant – Transportation Infrastructure Generating Economic Recovery

Grants available for transportation projects that meet long-term outcomes, create jobs, and stimulate economy

- Improve condition of existing infrastructure
- Improve economic competitiveness
- Improve community quality of life
- Promote sustainability (energy efficiency, less dependence on oil)
- Improve safety

**Priority given to projects completed in early 2012**

In September 2009, the project team applied for \$95 million to cover most of the cost of the bridge replacement

**Grant recipients to be announced in January 2010**

10



View from Milton

Existing



Proposed

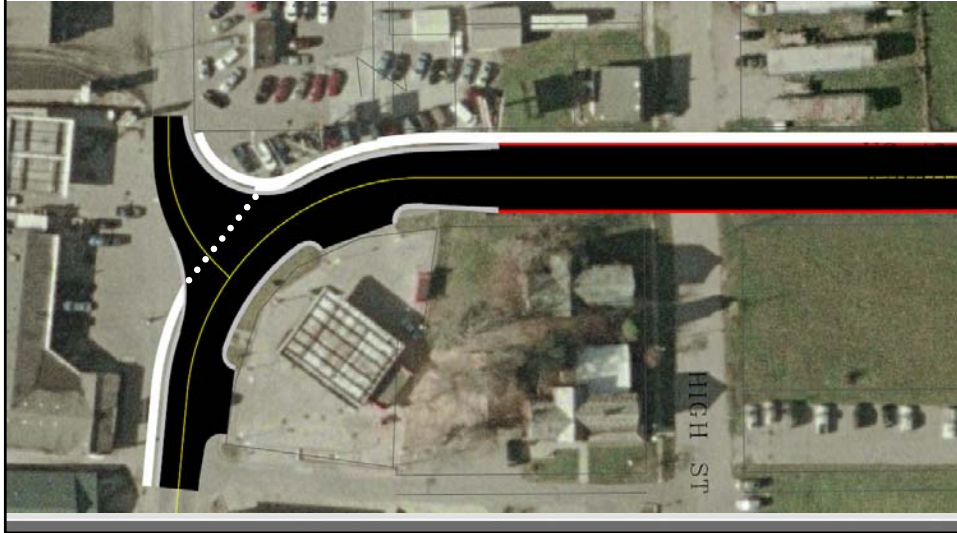


5-Foot Sidewalk on Bridge





## Sidewalk Connection in Milton



## Sidewalk Connection in Madison





## Construction Impacts

Some short term impacts will occur during construction

- Increased Travel Distances
- Economic

Investment of construction dollars results in a net overall regional benefit of jobs and economic output. This offsets the regional loss of jobs and economic output due to the bridge closure.

- Noise
- Vibration (below the threshold for structural damage)
- Construction Dust
- Erosion/Runoff
- River Navigation

15



## Proposed Mitigations for

- Community Connectivity
- Economic Based Impacts
- Impacts on Historic Resources
- Construction Based Impacts
- Other Impacts

16



## Kentucky Ferry Dock Area



## Indiana Ferry Dock Area





## Proposed Mitigation Items

- **Community Connectivity**
  - Free ferry service during bridge closure
  - Enhancements to land side of ferry locations in Milton and Madison (sidewalks, restrooms, signage, etc...)
- **Economic Based Impacts**
  - Promotional/tourism marketing effort for Madison and Milton
  - Business enhancement activities through Madison Main St Program (including Lower Milton)
  - Grant opportunities through new Historic Preservation Officer in Madison

19



## Proposed Mitigation Items

- **Impacts on Historic Resources**
  - Photo documentation of the bridge
  - Restoration of historic film from bridge opening
  - Amendment of the Madison Historic District (HD) to include additional eligible properties
  - Expansion of the Milton Third Street HD to include other historic properties
  - Preservation of builder plates and plaques from the bridge

20



## Proposed Mitigation Items

- **Construction Based Impacts**
  - Vibration monitoring for adjacent historic structures during construction
  - Improvements to construction staging areas (Milton Riverfront and Jaycee Park)
- **Other Mitigation**
  - Emergency medical helicopter service
  - Relocation of peregrine falcon nesting box
  - Planning studies for bicycle/pedestrian facilities in downtown Milton and along the river
  - Truss bridge similar in design to the original bridge

21



## Possible Construction Schedule

Jan 2010: TIGER Grant funding  
Feb 2010: Complete NEPA process  
June 2010: Construction Contract awarded  
July-Oct 2010: Strengthen and widen piers  
Jan/Feb 2011: Bridge closed to traffic  
Year 2011: Demolish and Rebuild Truss  
Jan/Feb 2012: Construction complete

22



## Comment Tonight

### Formal Comment Period

Please add your name to the list and limit comments to 3 minutes so that everyone has a chance to speak

### Comment Forms Available

If you would like to make a comment without speaking in front of the group, please fill out a comment form

### Court Reporter

To comment without speaking in front of the group, visit the FORMAL COMMENTS station after this session ends

23



## Comments after the Hearing

Comments on the EA are requested by  
**January 30.**

Comments can be sent by  
mail, email, fax, or phone to

John Carr

1648 McGrathiana Parkway Suite 340  
Lexington, KY 40511

phone (859) 254-5759      fax (859) 254-5764

email [JCarr@wilbursmith.com](mailto:JCarr@wilbursmith.com)

website [www.MiltonMadisonBridge.com](http://www.MiltonMadisonBridge.com)

24



# Comment Tonight

## Formal Comment Period

Please add your name to the list and limit comments to 3 minutes so that everyone has a chance to speak.

All comments will be considered by the project team and addressed in the FONSI