



SUMMARY
MILTON-MADISON BRIDGE
Section 106 Meeting
Clifty Falls Conference Room &
Conference Call/Web Meeting
July 15, 2009 at 1:30

Section 106 Parties

Nathaniel Adams
John Carr, IN SHPO
Patrick Cunningham
Michele Curran, NPS (by phone)
Camille Fife
George Freeman
James Glass, IN SHPO
Nancy Gruner, Madison Main Street
Link Ludington
Karen Nickless, National Trust (by phone)
Danae Peckler, KY SHPO (by phone)
Greg Sekula, Historic Landmark Foundation
Karie Stackelbeck, KY SHPO (by phone)
John Staicer, Historic Madison
Jan Vetrhus, Bicentennial Committee
Vickie Young
Virginia Jorgensen, Cornerstone Society

INDOT

Ben Lawrence, INDOT (by phone)
Patrick Carpenter, INDOT
Marvin Jenkins, INDOT
Staffan Peterson, INDOT (by phone)
Jim Ude, INDOT
Shaun Miller, INDOT

KYTC

Amanda Abner, KYTC
Tim Foreman, KYTC

FHWA

Janice Osadczuk, FHWA Indiana (by phone)
Greg Rawlings, FHWA Kentucky
Anthony Goodman, FHWA, Kentucky

Project Team

Robert Ball, WSA
John Carr, WSA (by phone)
David McBride, WSA
Tim Sorenson, WSA
Rebecca Thompson, WSA
Samantha Wright, WSA
Tom Meredith
Kathy Francis, Doe Anderson

Other Attendees

Konnie McCollum, RoundAbout Madison
Phyllis McLaughlin, Trimble Banner
Nathaniel Adams' Guest

Tim Sorenson welcomed attendees then asked participants to introduce themselves. He then reviewed the project schedule. Tim presented the project activities and documents produced to-date, including the four location alternatives recommended for further study. He asked for any questions on these items.

- Michele Curran asked if the Structural Analysis Report was available. Tim S. indicated that the report is currently being reviewed and will be released shortly. In general, the report says the piers have 80+ years of life remaining and can support a structure with some mitigation.

- Nathaniel Adams asked if additional piers would be required. Tim S. indicated that Pier 5 (the first pier in the water nearest the Indiana shore) is in distress and probably can not be salvaged. This pier would likely be removed and relocated to land to solve this problem.
- Michele asked if the analysis includes a cost estimate. Tim S. indicated that we are working on more refined cost estimate now. The preliminary estimates should be available by the August 31 meeting, along with preliminary alignments and impacts.
- Nathaniel mentioned that there are some folks who would like to preserve the existing bridge. Tim S. explained that the new alignment alternatives (Tiber and Canip) have two sub-alternatives. One includes sidewalks on a new bridge and the other would assume the third party management of the existing bridge, preserving it as a bicycle/pedestrian crossing. Pedestrian traffic places less live load on the structure, but we are still studying the wind and barge loads.
- Nathaniel asked if these analyses would these be necessary for a pedestrian bridge. Tim S. indicated that we do not know at this time.
- Link Ludington asked about the distribution of bridge trips ending in Madison. Tim S. indicated that the study summarized in the Needs and Deficiencies Report shows 70% of bridge traffic stops in Madison: 45% of the traffic stops in lower Madison and 25% continues to the hilltop.
- Link asked if there has been any discussion about which alternative would provide a future bypass. Tim S. indicated that a discussion about how this might occur with each remaining alternative is included in the Location Screening Report.

Robert Ball then provided an overview of the development of the draft Area of Potential Effect (APE). Questions on the APE included:

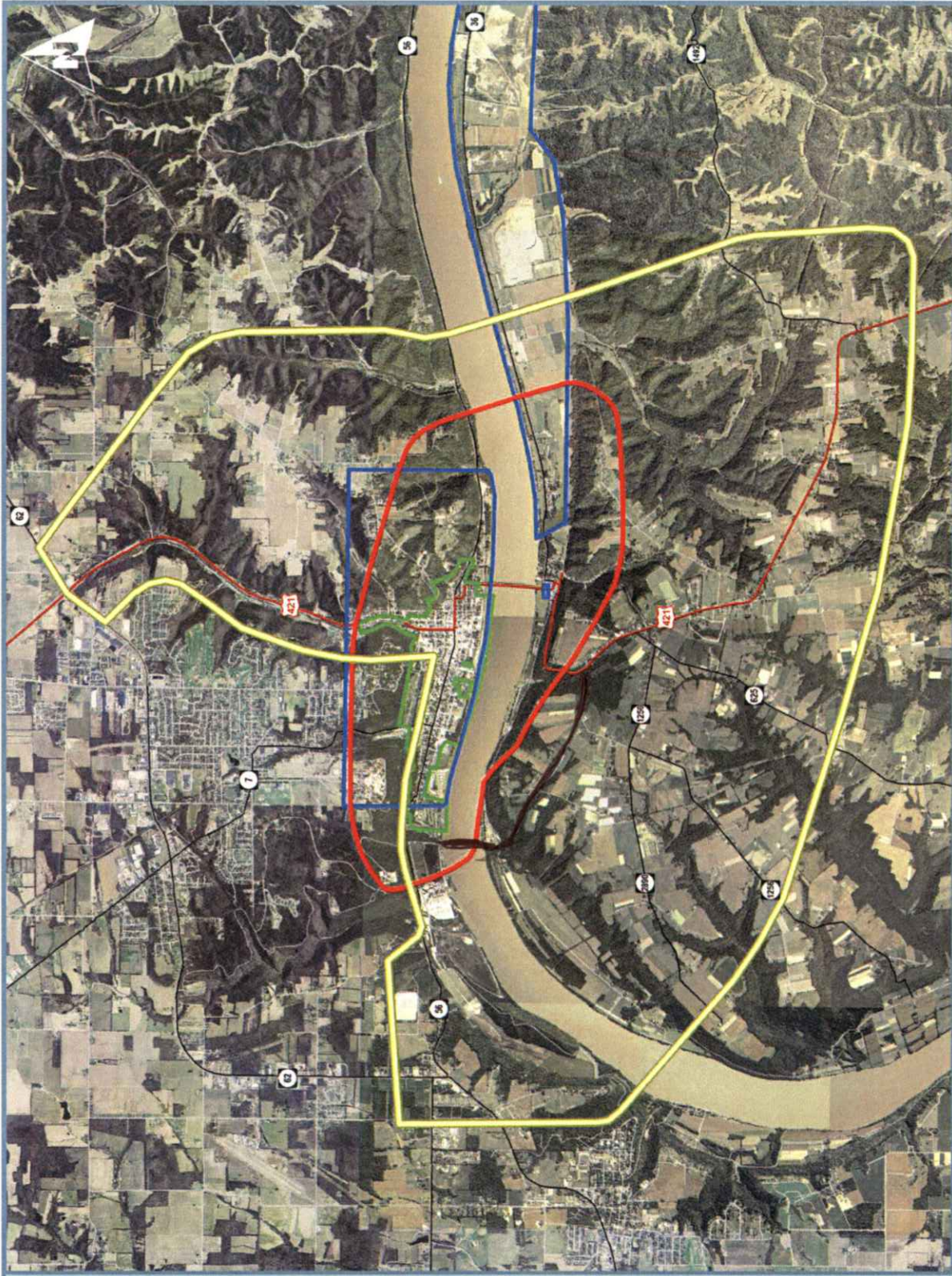
- George Freeman asked why visibility of the bridge mattered in defining the APE. Robert indicated that the process requires that we take into account the visual effect on historic resources.
- Greg Sekula asked if the entire Hunters Bottom district should be included in the APE: if a portion of a district is impacted, then impacts on the whole district should be discussed. Robert explained that our reasoning was to include a cohesive piece of the district that could be impacted by the remaining alternatives. We will discuss how impacts to this piece of the district could impact the entire district, but won't survey properties remote from the bridge location alternatives.
- Nancy Gruner pointed out that the Parallel Alternative is shown on the APE, instead of the Superstructure Replacement Alternative. Robert indicated that we will correct this on the graphic.
- Greg S. asked if the APE should include the area for the future bypass? Tim indicated that this is a bridge replacement project. There are currently no plans in Kentucky or Indiana that include work beyond this project for a regional connection. The traffic projections also do not indicate that a regional connection will be needed in the next 20 years.
- John Stacier explained that INDOT's Commissioner Sharp described this as a linkage between I-71 and I-74. Jim Ude indicated that INDOT studied the possibility for a regional connection in the Markland area, but this study did not show the need for a regional

connector either. Tim S. explained that Commissioner Sharp may have indicated that this would be a regional connection, but that is no longer in the INDOT long range plan.

- Camille Fife asked why projects only consider traffic needs 35 years into the future when a bridge can last 80 years. Tim S. indicated that this is a typical planning horizon, as it is difficult to estimate growth beyond this timeframe.
- Greg S. asked whether the APE includes sections along SR 56 to a point where a future connection may tie in. Robert indicated that the APE does not include this entire area, but we will be looking at structures along SR 56 out to the hollows.
- Camille asked why the small corner in the northeast of the Madison National Register District was left out of the APE. Robert indicated that we looked at an area within 2 miles of the bridge location, and there is no view of the bridge from that corner of the District.
- Camille asked what level of study will go on within the APE. Robert Ball and Tom Meredith have been out photo-documenting each structure over 50 years old. Prior to that, archival research was undertaken throughout the larger study area.
- Vickie Young asked how long the work has been going on. Robert indicated that staff have been in the field for about a month and a half.
- Vickie asked how many landowners have been contacted. Robert indicated that a few property owners were home when he and Tom were in the field, and they are also setting up interviews.
- James Glass asked if the team is using the National Register listing as a starting point. Robert confirmed that the team has this list. Camille has also provided the National Landmark survey for the project team's use. Link identified the Indiana Historic Sites Survey of 1988 as another reference.
- James explained that the National Register nomination was done a long time ago, and would not have a list of contributing properties.
- John Staicer asked if the fire at the courthouse affected the research. Robert said the fire has not effected the research to a great degree, thanks to Camille's work in the past. We are not doing much deed research for eligibility.
- Camille recommended the extension of the APE to the north to encompass the entire Madison National Register District. Tim S. indicated that the team will consider this modification. [Note: Since this meeting, the project team has agreed that the APE should not be expanded to encompass the entire Madison National Register District. The project location is not within view of the excluded portion of the District. The effects from the project will be assessed to the District as a whole, so including this section in the APE is not necessary for effects evaluation.]

Tim S. then reviewed the schedule for the Aug. 31st/Sept. 1st Eligibility Workshop. The team is preparing a notebook of potentially eligible properties for discussion at the Workshop. The notebooks will be mailed out at the beginning of August so that attendees will have time to review the materials.

With no further discussion, the meeting concluded at 2:45 p.m. One comment form was returned during the meeting and is attached to this summary.



- Legend**
- Study Area
 - APE
 - National Regulator District
 - National Historic Landmark District

Milton-Madison
Bridge Project

Figure 8. Area of Potential Effect on Aerial

Pat Cunningham Bridge Option 2